

SPECIFICATION OF RUBBER WOOD PANEL

I. Sizes and characteristics of Rubber wood panel:

1. Standard sizes:

Thickness (mm)	12/15/18/22/30/33/40/44/50/56/60	Grade: AB, AC, BC or customized
Width (mm)	650/1100/1210/1220	
Length (mm)	2440/3650/4500/5100/5900	

2. Characteristics:

- **Moisture:** 10 (+/-2%)
- **Lamellas/ Stave:** 35 - 80 mm.
Length & Width tolerance: 0/+3mm
Thickness tolerance: +/- 0.2 mm
- **Glue:** D4
Bonding in length: PVAC glue Synteko 3314 (Akzo Nobel Casco)
Bonding in width: Koyo Bond PVAC 2 component (Koyo)
- **Density:** 630 kg/m³
- **Sanding:** Grit 180-240. Both side of the panel

Thickness of Rubber wood panel



3. Popular sizes:
3.1. Finger joint board

EUROPE MARKET (1100x4500mm) <i>Usage:</i> Door, staircase		
18mm	1100mm x 4500 mm	36 pcs/bundle
22mm	1100mm x 4500mm	30 pcs/bundle
30mm	710mm x 3650mm	32 pcs/bundle
	810mm x 3650mm	32 pcs/bundle
	1210mm x 3650mm	20 pcs/bundle
33mm	1100mm x 4500mm	20 pcs/bundle
40mm	650mm x 4500mm	25 pcs/bundle
	650mm x 5100mm	25 pcs/bundle
	1100mm x 4500mm	17 pcs/bundle
44mm	1100mm x 4500mm	15 pcs/bundle
50mm	650mm x 4500mm	22 pcs/bundle
56mm	650mm x 4500mm	20 pcs/bundle
60mm	650mm x 4500mm	17 pcs/bundle
70mm	650mm x 5100mm	15 pcs/bundle

ASIA MARKET (1220x2440mm) <i>Usage:</i> Table top, dining table, shelf		
8/10mm	1220mm x 2440 mm	70-80 pcs/bundle
10mm	1220mm x 2440 mm	
11/12mm	1220mm x 2440 mm	
15mm	1220mm x 2440 mm	60 pcs/bundle
17/18mm	1220mm x 2440 mm	50 pcs/bundle
23/24mm	1220mm x 2440 mm	40 pcs/bundle
30mm	1220mm x 2440 mm	30 pcs/bundle
33mm	300/550mmx3600mm	30 pcs/bundle
38mm	300/550mmx3600mm	25 pcs/bundle

3.2. Finger joint block

55mm x 55mm	4500mm
70mmx70mm	4500mm
85mmx85mm	4500mm

II. Rubber wood panel quality description:

A Grade



B Grade



C Grade



A face is Top side of AB grade. A face is absolutely beautiful, lamellae are of even colour, not allowed knots , rot, cracks, wormhole, black lines and free of natural/ resulting from drying/ technical defects

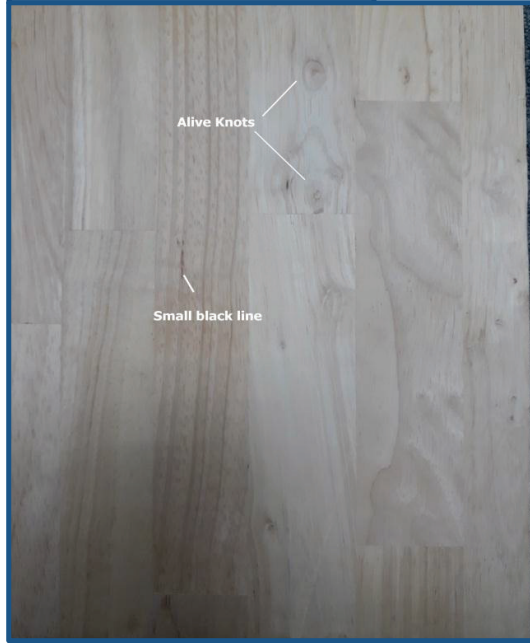
B face is Bottom side of AB grade and is Top side of BC grade BC. Different in color is permitted; small, sound, non-penetrating knots are permitted (less than 5 mm in diameter, averaging 4-5 knots on a panel); not allowed knots , rot, cracks, wormhole, and free of natural/ resulting from drying/ technical

C face is Bottom side of BC grade. C face is unlimited black lines, allows sound knots, relatively bad color (any colour, any mixture of grain). Technical defects/ resulting from drying are not allowed

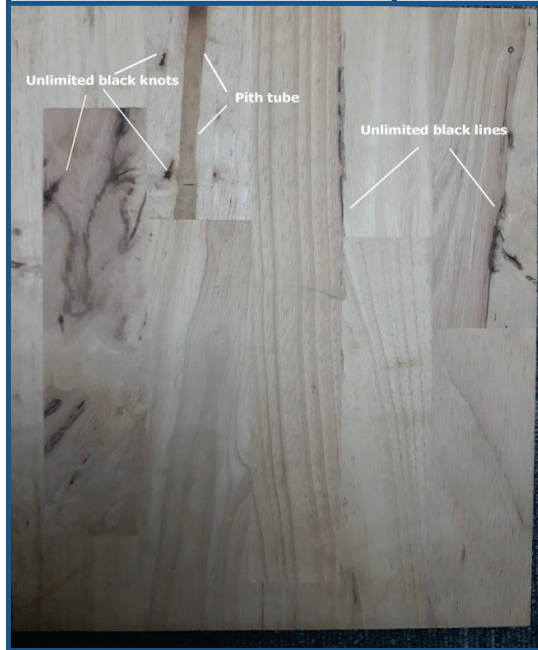
Rubber Wood panel Standard A

**Uniform color
no defect**

Rubber Wood panel Standard B



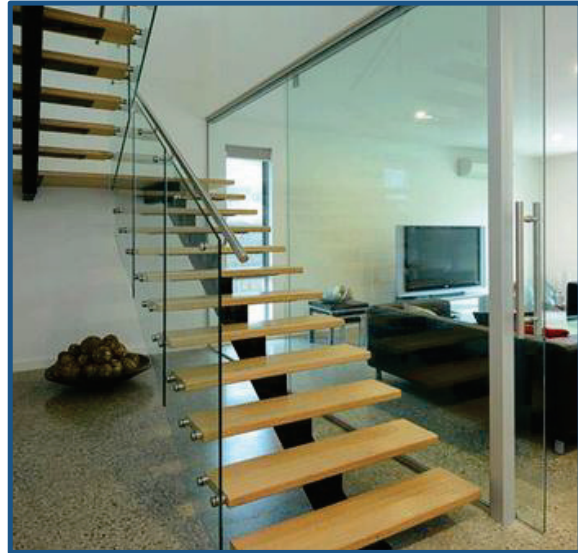
Rubber Wood panel Standard C



III. Rubber wood panel application:

Home furniture

Source: Internet



Office/ store/ hotel/ restaurant/ bar

Source: Internet

